



p-u-l-s-o-t-r-o-n-i-c

Pulsotronic-Anlagentechnik GmbH

Subject to change without notice!
Rev. 1801

Ring Detector for the use in Flow Wrapping Machines M-Pulse2 / M-Pulse3

GFS

Application

Due to the low installation height these allmetal detectors are particularly suitable for installation in flow wrapping machines and multihead weigher.

A special feature is that there are no metal-free zones necessary before or after the sensor. A direct integration in pipe systems is possible, the ends of the sensor are used simultaneously as a flange. The product tube is made of FDA-approved plastic and can be removed without tools.



ring detector GFS

Function

If metal falls through the sensor the signal is collected and processed by the operating electronics. The electronics is able to detect smallest metal parts and fade out interference signal reliably. If metal is detected, this can be signaled acoustically or optically. The electronic is housed in a separate box. It is connected to the sensors with a 15 m connection cable. The electronics thus always can be mounted in an ergonomically favorable position. So the device is easy to operate even in the tightest spaces.

Specific characteristics

- compact design
- sensitivity for ferrous metals and non-ferrous metals up to 0,6 mm
- calibration free
- various sizes and types available
- protection class IP65
- powerful electronic with product effect off-setting
- connection via Ethernet
- designed for installation in flow wrapping machines and multihead weigher



p-u-l-s-o-t-r-o-n-i-c

Pulsotronic-Anlagentechnik GmbH

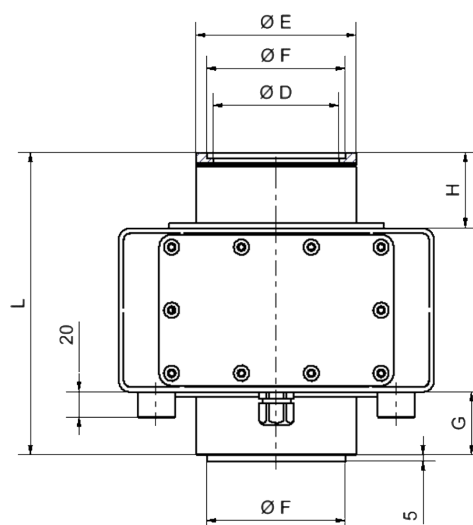
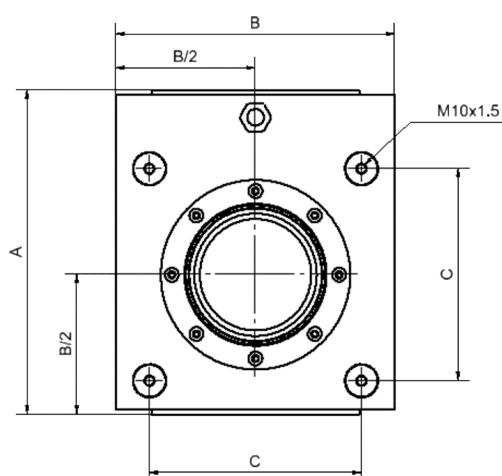
ring detector GFS

Type	GFS 100		GFS 150		GFS 200		GFS 250	
Mechanical data								
Height (L)	240 mm		260 mm		300 mm		330 mm	
Sensor aperture (D)	100 mm		150 mm		200 mm		250 mm	
Diameter (E)	127 mm		177 mm		227 mm		277 mm	
Diameter (F)	110 mm		160 mm		210 mm		260 mm	
Dimensions (A x B)	290 x 250 mm		375 x 330 mm		465 x 420 mm		545 x 500 mm	
(C)	190 mm		270 mm		360 mm		440 mm	
(G)	50 mm		50 mm		50 mm		50 mm	
(H)	60 mm		60 mm		60 mm		60 mm	
Weight	20 kg		52 kg		69 kg		85 kg	
Connection	flange / pipe / upper / on inquiry							
Conditions of use								
Storage temperature	-10 .. 60°C							
Operating temperature	0 .. 60°C							
Protection class	IP65							
Connection Control unit	Supply via control unit; attached with 15 m cable							
Sensitivity ¹								
Material - test pieces	FE	SS	FE	SS	FE	SS	FE	SS
M-Pulse2	0,6	0,9	0,8	1,2	1,0	1,8	1,2	2,0

Order code: **Electronic:** M-Pulse2

Sensor: GFS 100 - 150

(e.g.: M-Pulse2 GFS 100)



¹ The actual sensitivity depends on various factors. Unfavourable environmental conditions or vibrations can reduce the sensitivity. Conductive test material can also influence the sensitivity. For obliging information please contact our service or sales department. Our service includes product tests in our headquarters. (all data in mm)

Pulsotronic-Anlagentechnik
GmbH

Neue Schichtstraße 7
D-09366 Niederdorf

Fon: 037296 9383-500
Fax: 037296 9383-501

info@pulsotronic-anlagentechnik.de
www.pulsotronic-anlagentechnik.de