

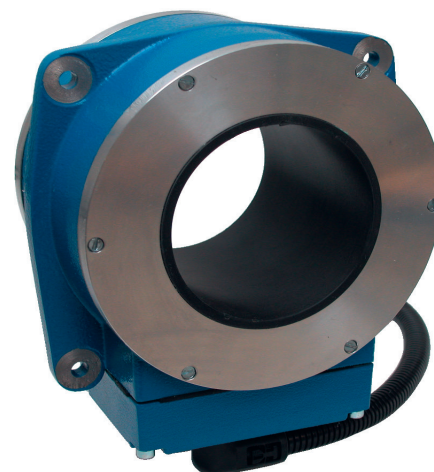
Ring sensor

Type: RG – Digital 2 / M-Pulse2

APPLICATION

This ring detector is used in our metal separators as well as in many other branches of industry. In applications in which the performance of analog ring sensors is not sufficient the detectors of the RG series do have great advantages due to their capacity.

Especially the extremely high sensitivity and the possibility to eliminate product effects with the appropriate electronics allow outstanding solutions in the fields machine protection, process control and monitoring.



HANDLING

Depending on the electronics operation is realised via a membrane keyboard and a LC-display. By this all important parameters

can be displayed and if necessary changed easily. The sensitivity of the sensor also is adjustable this way. Precise information is

stated in the documentation of the operating electronics M-PULSE2 and Digital2.

FUNCTION

Contrary to classical metal sensors the working principle of this detector is based on a system of three coils. This enables the user to analyse signals precisely and

to draw conclusions on their origin. By this it is for example possible to distinguish the signals into vibration, product or metal. This additional data allows a more

sensible reaction on metallic residue. The sensors do not require maintenance or calibration.

MOUNTING

The sensing range of the sensor partially is situated above and under the opening of the detector. Big metal pieces can already be detected in this sector. In order to guarantee the accurate function-

ing of the sensor, these sectors must be kept free of metal. This so-called metal-free zones are divided into two types:

- Metal-free zones for movable pieces

- Metal-free zones for non movable pieces

The dimensions of these zones are specified in the particular data sheets.

