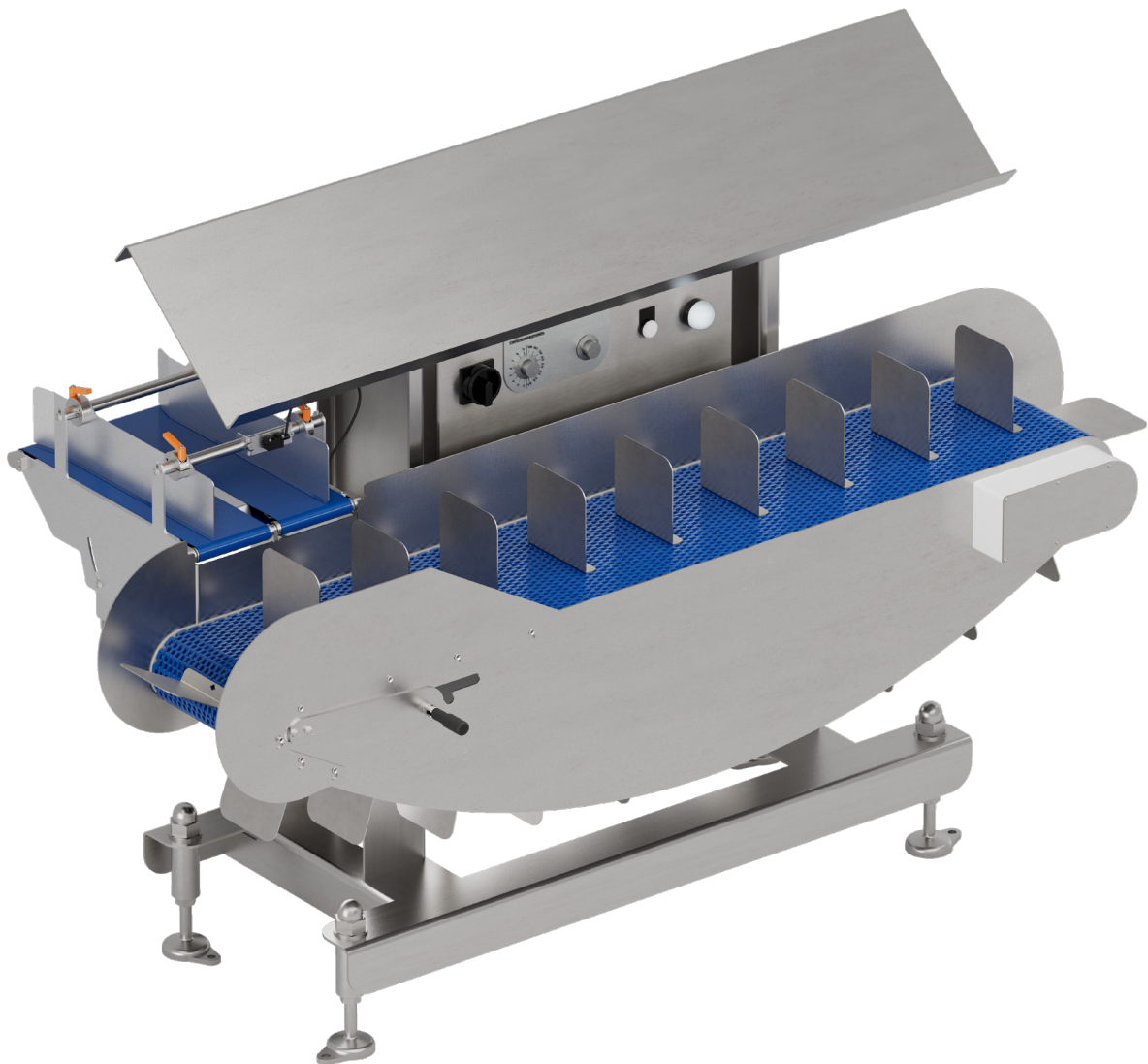
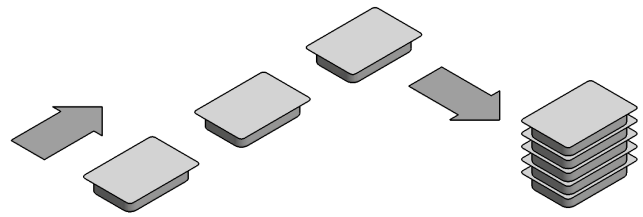


Stacking unit

Type: PM1



Type: PM1

SEMI-AUTOMATIC PACKAGING FOR MID-RANGE PERFORMANCE

Simple

The clearly arranged and minimalistic handling simplifies your employees' daily work on the system.

Flexible

The fast and tool-free adaptation of the system to changing product dimensions, stacking heights or packaging formats guarantees maximum flexibility for existing and future requirements.

Ergonomic

The work flow and working heights on the PM1 stacking unit are easily adaptable and meet the highest ergonomic requirements.

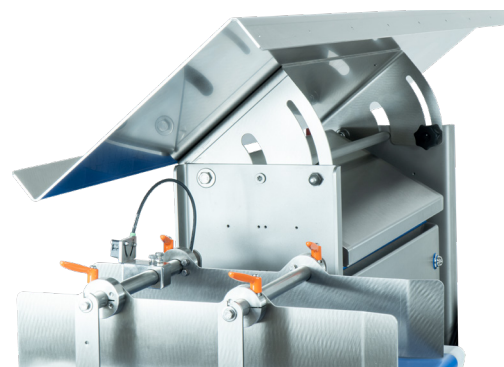
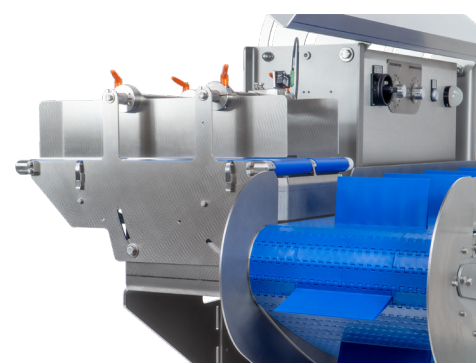
Economical

The automatic creation of packaging units avoids incorrect product quantities.

Additional operations such as the creation, labeling and sealing of cartons or manual palletizing are made possible by simplifying the packaging process.

Compact

The optimized dimensions in combination with the flexible operating side and the flexible arrangement in line or at 90° to the line enable use even in the most limited space conditions.



OPTIONS

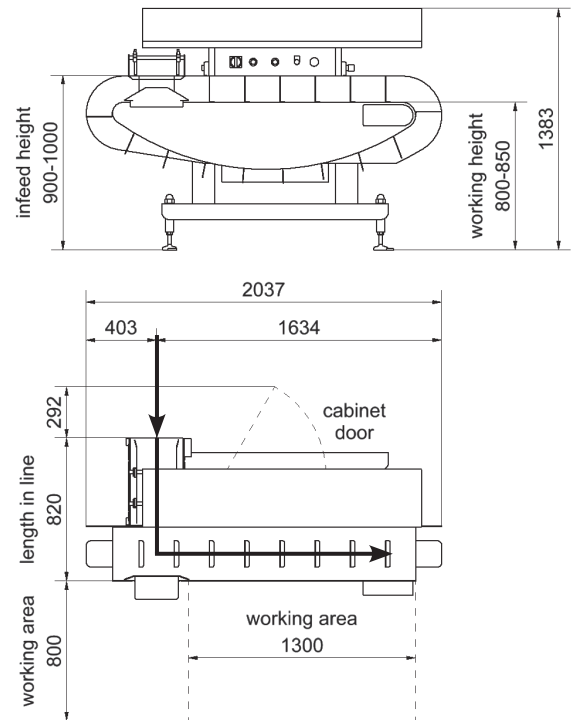
- Belts for varying product widths and lengths
- Storage surface
- Button for line stopping / emptying
- Project-specific length of the handling area / number of workstations
- Operating side left / right
- Arrangement in line / 90° to the line

Type: PM1

TECHNICAL DATA / DIMENSIONS

Performance	90 products/min (PM1-Q – arrangement 90°) 110 products/min (PM1-L – arrangement in line) depending on product dimensions
max. product length	340 mm
max. product width	280 mm
Stacking height	150 mm products/stack settable combinations possible (5-4-5-4)
Length working area	1,300 mm (standard) project specific expandable
Height working area	800 – 850 mm
Infeed height	900 – 1,000 mm
Length in line	820 mm + 800 mm working area (PM1-Q – arrangement 90°) 2,185 mm (PM1-L – arrangement in line)
Operation	rotary selector switch for <ul style="list-style-type: none"> ▪ products/stack ▪ performance (products/min)
Protection class	IP54
Temperature range	+5°C to +40°C
Product parameter memory	-
Material	stainless steel frame in openframe design
Interfaces	2 Outputs (relay) <ul style="list-style-type: none"> ▪ system ready/not ready ▪ system running/not running
Rated voltage	L/N/PE 230 VAC
Nominal frequency	50 Hz
Power supply	ca. 0,5 kVA
Compressed air supply	-
Drive	DC- and servo drives

PM1-Q (arrangement 90°)



PM1-L (arrangement in line)

