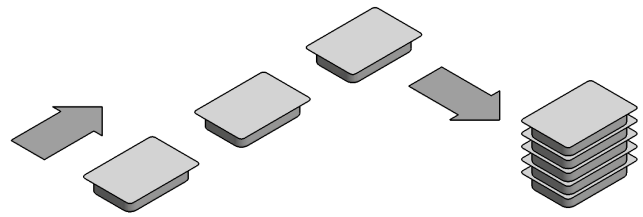


Stacking unit

Type: PM2



Type: PM2

SEMI-AUTOMATIC PACKAGING FOR HIGH-RANGE PERFORMANCE

Simple

The clearly arranged and minimalistic handling on the 9" touch panel simplifies your employees' daily work on the system.

Flexible

The fast and tool-free adaptation of the system to changing product dimensions, stacking heights or packaging formats guarantees maximum flexibility for existing and future requirements.

Ergonomic

The work flow and working heights on the PM2 stacking unit are easily adaptable and meet the highest ergonomic requirements.

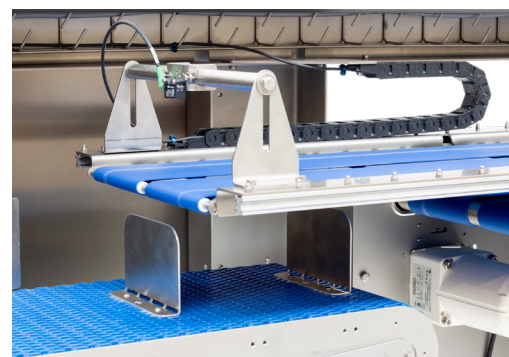
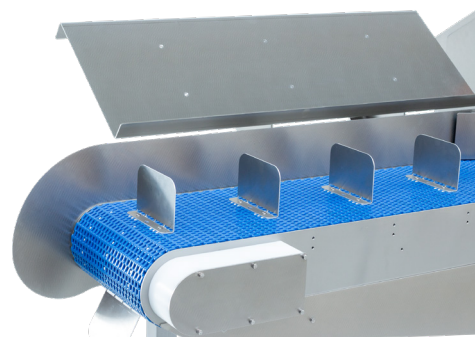
Economical

The automatic creation of packaging units avoids incorrect product quantities.

Additional operations such as the creation, labeling and sealing of cartons or manual palletizing are made possible by simplifying the packaging process.

Compact

The optimized dimensions in combination with the flexible operating side and the flexible arrangement in line or at 90° to the line enable use even in the most limited space conditions.



OPTIONS

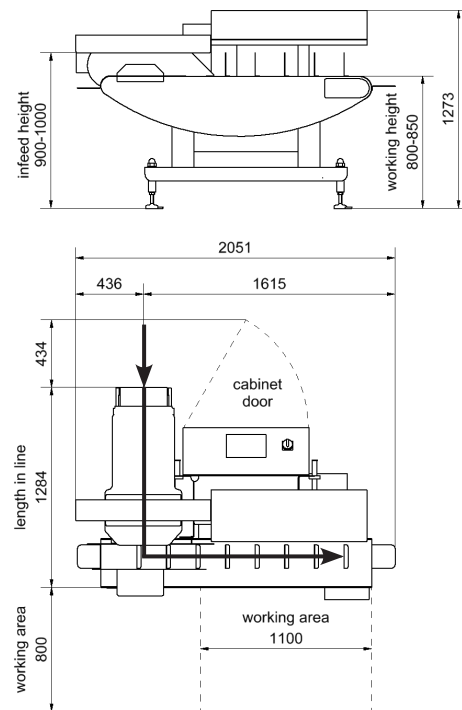
- Belts for varying product widths and lengths
- Storage surface
- Button for line stopping / emptying
- Project-specific length of the handling area / number of workstations
- Operating side left / right
- Arrangement in line / 90° to the line

Type: PM2

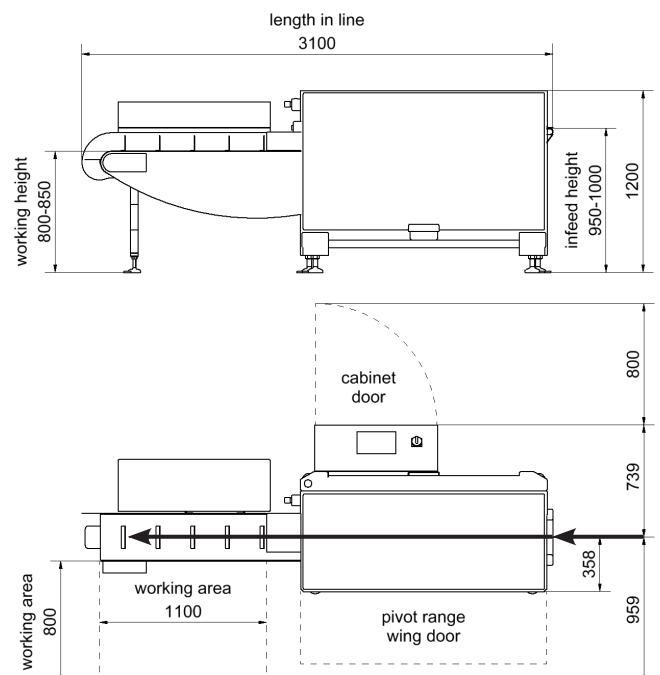
TECHNICAL DATA / DIMENSIONS

Performance	140 products/min (PM2-Q – arrangement 90°) 180 products/min (PM2-L – arrangement in line) depending on product dimensions
max. product length	340 mm
max. product width	280 mm
Stacking height	150 mm products/stack settable combinations possible (5-4-5-4)
Length working area	1,100 mm (standard) project specific expandable
Height working area	800 – 850 mm
Infeed height	900 – 1,000 mm
Length in line	1,284 mm + 800 mm working area (PM2-Q – arrangement 90°) 3,100 mm (PM1-L – arrangement in line)
Operation	Touchpanel 9"
Protection class	IP54
Temperature range	+5°C to +40°C
Product parameter memory	16
Material	stainless steel frame in openframe design
Interfaces	2 Inputs (relay) ▪ system ready/not ready ▪ system running/not running network RJ45 (OPC-UA)
Rated voltage	L/N/PE 230 VAC
Nominal frequency	50 Hz
Power supply	ca.1 kVA
Compressed air supply	-
Drive	asynchronous and servo drives

PM2-Q (arrangement 90°)

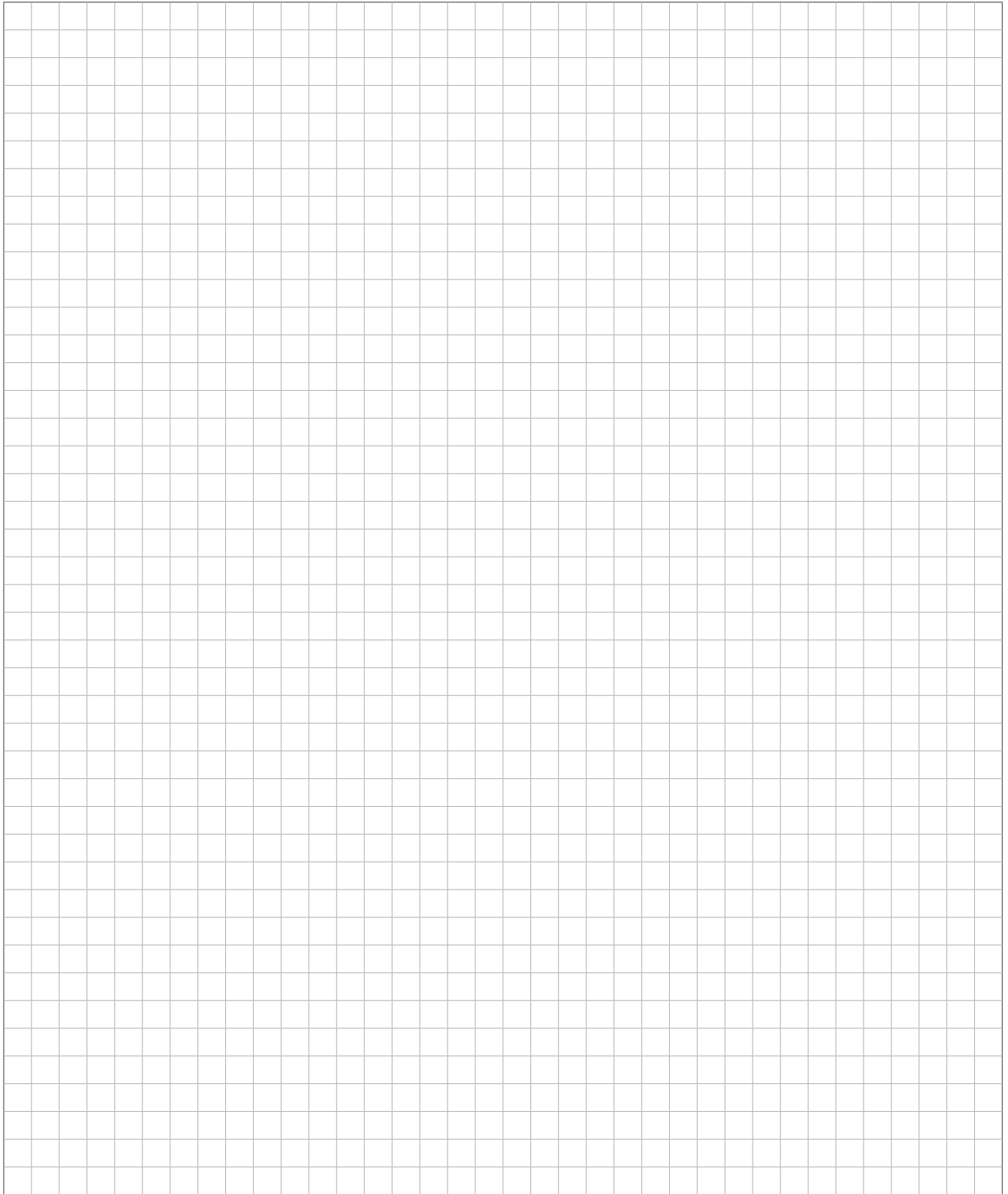


PM2-L (arrangement in line)



Type: PM2

NOTES

A large grid area for taking notes, consisting of a 30x30 grid of small squares.

Version: 2302eng | Typing and printing errors reserved. Subject to changes.