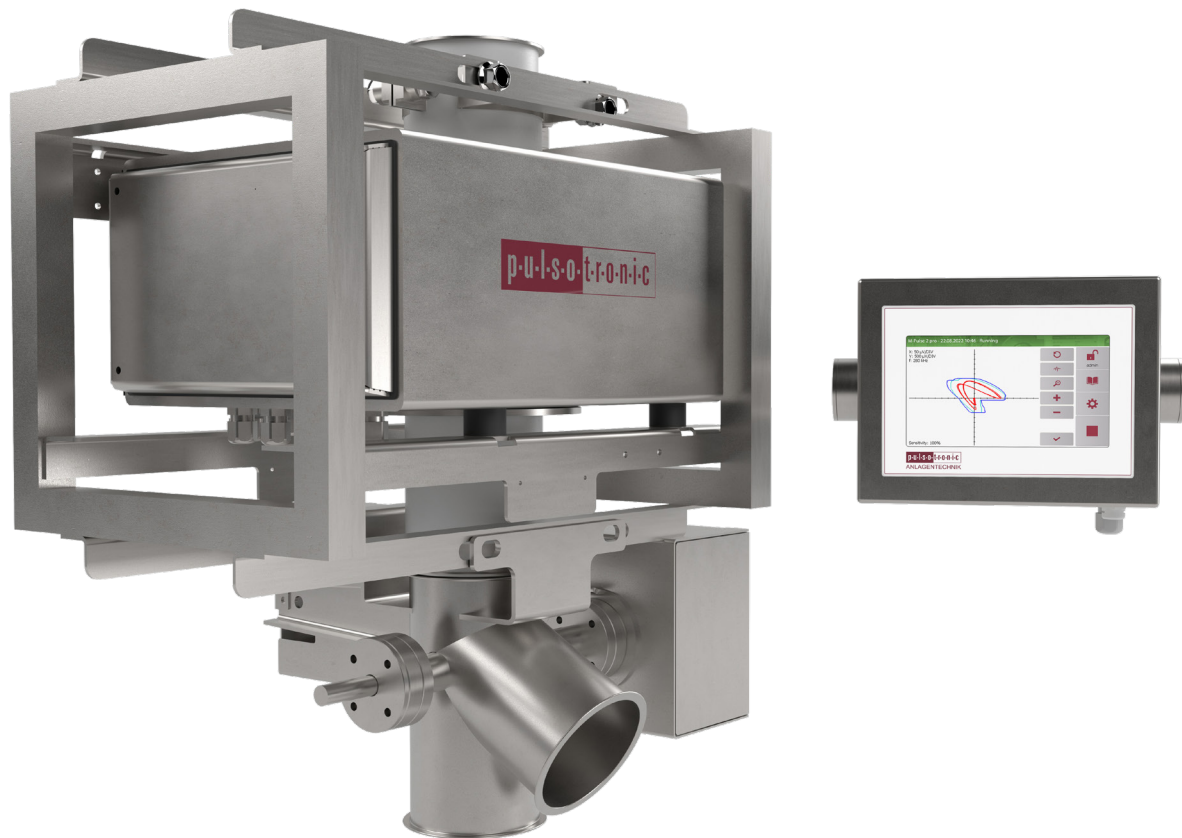


# Metal separator

Type: KR – M-Pulse2pro / Digital2



## SPECIFIC CHARACTERISTICS

- ☑ maintenance-free mechanics
- ☑ with external operating panel 5 m
- ☑ very big transmission ports available
- ☑ robust, pneumatic-driven ejection mechanics (optional)
- ☑ according to the application different electronics available
- ☑ design with or without ejection mechanics available
- ☑ protection class IP65
- ☑ stainless steel housing
- ☑ supporting frame can be integrated in existing constructions

# Type: KR

## HIGH PRECISION METAL DETECTION FOR FREE FALLING PRODUCTS

The **KR** separator can be used in almost all areas of industry. The device is made of stainless steel and is therefore also suitable for the food industry. Transmission ports with a maximum diameter of 300 mm allow an extremely high material throughput at maximum sensitivity. This makes the separator particularly suitable for filling plants.

The sensor coil of the metal detector is located in the upper part of the separator. The operating electronics give the impulse to activate the ejection flap when metal is detected by the sensor. The metal is safely sorted out of the product stream via the bad

outlet. Depending on the electronics, the function of the ejector can be monitored.

The robust pneumatic-driven mechanics guarantees durability. The KR can be supplied in a wear-resistant version for abrasive products.

For places that are difficult to access, there is the option of mounting the control panel at a distance of up to 10 meters. In this way, the device remains easy to operate. A pressure control device can always monitor the correct function.

## TECHNICAL DATA

Type <sup>4</sup>	KR100	KR120	KR150	KR200	KR250	KR300
<b>Mechanical data</b>						
Material-ejection unit	stainless steel					
Material-base frame	stainless steel					
Material-protection tube <sup>2</sup>	POM					
<b>Conditions of use</b>						
Storage temperature	-10 – 60°C					
Operating temperature	0 – 50°C					
Protection class	IP 65					
Electrical connection	see datasheet of the control unit					
Pneumatic connection	4 – 6 bar, filtered, free of water and oil; self-sealing-coupling - fitting NW 7,2					
Throughput <sup>3</sup>	12.000 l/h	16.000 l/h	25.000 l/h	44.000 l/h	69.000 l/h	100.000 l/h
Bulk characteristics	free flowing					

Sensitivity <sup>1</sup>	KR100		KR120		KR150		KR200		KR250		KR300	
Material – Test pieces <sup>5</sup>	Fe <sup>5</sup>	SS <sup>5</sup>	Fe	SS	Fe	SS	Fe	SS	Fe	SS	Fe	SS
M-Pulse2	0,4	0,9	0,5	1,0	0,6	1,2	0,8	1,5	1,0	1,8	1,2	2,0
Digital2	0,5	1,2	0,8	1,4	0,9	1,6	1,3	2,0	1,6	2,2	1,8	2,5

### Ordering code:

Electronic                      Type of separator  
M-Pulse2pro / Digital2      KR 100 – KR 300                      (e.g.: M-Pulse2pro KR 200)

1) The actual sensitivity depends on various factors. Unfavourable environmental conditions or vibrations can reduce the sensitivity. Conductive test material can also influence the sensitivity. For obliging information please contact our service or sales department. Our service includes product tests in our headquarters. (all data in mm)

2) Other materials available.

3) Measured with granulate PET - grain dimension 2 - 3mm.

4) Bigger dimensions and in-between sizes available on request.

5) Fe → Ferrous / SS → Stainless steel

# Type: KR

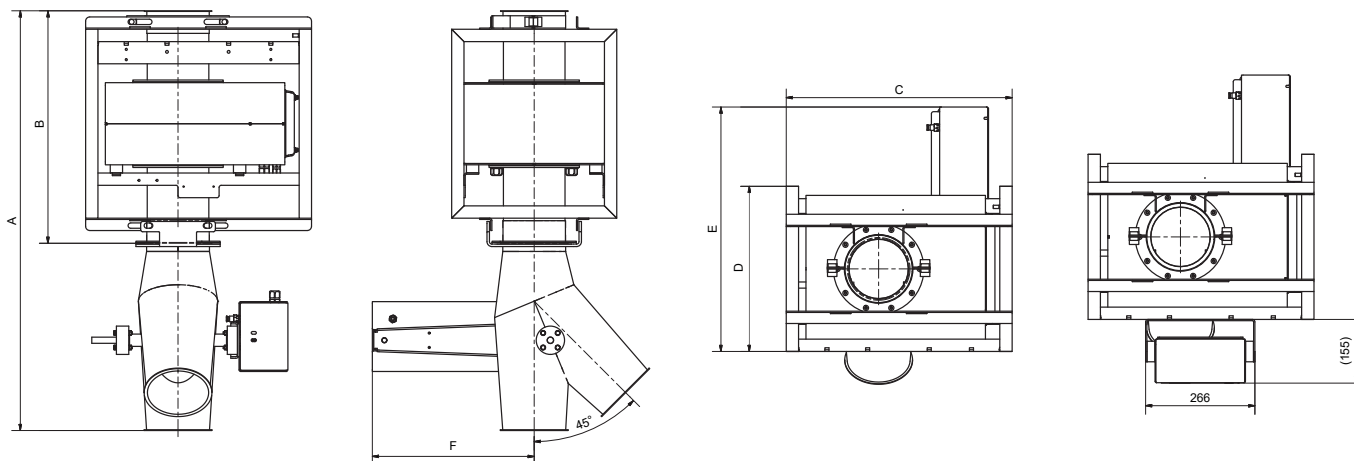
## DELIVERY PROGRAMM & ACCESSORIES

All devices of the KR series are serially delivered without ejection mechanics. Adapted mechanics are separately available for all dimensions. For the connecting of the device to a piping option-ally a kit consisting of 3 welding socket pieces, 3 snap closing circlips and 3 cooper gaskets are available. Please inform us about the necessary accessories when placing your order.

Designation	Comment
Pneumatic guard	When ordering please specify
Ejector guard (Indicates malfunction of the ejection unit)	When ordering please specify
Cooling by compressed air 60 – 100°C	When ordering please specify
Product pipe wear resistant (glass pipe)	When ordering please specify
Product pipe antistatic/ food	When ordering please specify
External operating panel 10 m	When ordering please specify
Ejection flap EX-T (angle 45°)	When ordering please specify
Ejection flap EX-S (dustproof / angle 45°)	When ordering please specify
Ejection flap EX-K (dustproof / wear-resistant / angle 45°)	When ordering please specify
Ejection flap EX-S (angle 60°)	When ordering please specify
Connecting kit KR for ejector	When ordering please specify
Connecting kit KR without ejector	When ordering please specify

## DIMENSIONS

For KR sensors with ejection flap EX-T



Gerätetyp	KR 100	KR 120	KR 150	KR 200	KR 250	KR 300
Abmessung A	811 mm	921 mm	1.022 mm	1.362 mm	1.626 mm	1.906 mm
Abmessung B	425 mm	505 mm	566 mm	790 mm	950 mm	1.100 mm
Abmessung C	490 mm	470 mm	550 mm	650 mm	810 mm	980 mm
Abmessung D	324 mm	346 mm	402 mm	510 mm	685 mm	800 mm
Abmessung E	571 mm	646 mm	595 mm	680 mm	755 mm	800 mm
Abmessung F	408 mm	400 mm	394 mm	363 mm	412 mm	399 mm

Version: 2401eng | Typing and printing errors reserved. Subject to changes.